

# LEADER

## IN HEAVY ENGINEERING

DELIVERING QUALITY THROUGH PASSION & COMMITMENT



**NS ENGINEERING**  
COMPANY PRIVATE LIMITED

An ISO 9001 - 2008 certified company

Established in 1979



**NS ENGINEERING**  
COMPANY PRIVATE LIMITED

An ISO 9001 - 2008 certified company

Established in 1979

Company Name:	NS Engineering Company Private Limited
Date of Establishment:	19 - 07 - 1979
Registry:	Ministry Corporate Affairs Government of INDIA
CIN Registration Number:	U29219AP1989PTC010511
ROC Code:	ROC-Hyderabad
Registration no:	010511
Legal Status:	Wholly owned Private Limited
Business Scope:	Producing a wide range of heavy engineering products and components for various industries

IMPORT & EXPORT PERMITS

I/E Permits:	Yes
--------------	-----

# **NS ENGINEERING**

An ISO 9001 - 2008 Certified Company

---

Instituted in 1979 by visionary engineers, NS Engineering has over the decades made a place for itself globally in determining and servicing heavy industrial trends in power, cement, steel and defence sectors. A thought leader in the capital goods industry, NS Engineering with its state of the art facilities strives to provide turnkey Heavy Engineering solutions.

## MANAGEMENT



**Mr. NAGABUSHANAM**  
Managing Director

Nagabushanam Pallemati, Managing Director has been instrumental in building and growing the company since its inception. His deep-rooted knowledge in industrial engineering and his experience in manufacturing of capital goods have allowed NS Engineering to serve hundreds of clients satisfactorily over three decades.



**Mr. SUBBA RAO**  
Joint Managing Director

Subba Rao, Joint Managing Director of NS Engineering holds immense experience in the power sector industry, with particular expertise in machine tooling. His experience and technical competence in developing jigs, fixtures and tooling for machining of critical components have helped the company immensely.



**Mr. NAVEEN PALLEMPATI**  
Executive - Director

Naveen Pallemati has in four years grown the company multi fold. His global outlook colored by his international education and experiences has expanded NS Engineering into a leading engineering organization in India with exports being the new growth driver for the company.



**Mr. G.M.K. RAO**  
General Manager

Mr.G.M.K.RAO, a graduate in Mechanical Engineering has over 35years of experience in heavy machining and manufacturing of critical components. He had also served in various companies holding key positions.

# HUMAN RESOURCES

- Our production team is well acquainted with latest techniques of manufacturing and well versed with various codes of manufacturing such as ASME, ASTM, AWS, DIN, EN, and IS.
- We train our welders for various welding techniques and positions, are qualified under Lloyd's, DNV, BVQI, Tata Projects.

## OUR STRENGTH

We have highly skilled and qualified machine operators with vast experience to cater to the intricate and complex machining requirements. We also periodically upgrade our staff with latest machining techniques and machine tools.

Our STAFFING STRENGTH	
Production Engineers	42
Quality Engineers	16
Marketing Team	12
Design Team	09
Research	03
Work Force in Production	610
Total	692

# TURNKEY SOLUTION



## DESIGN

- Gathering requirements and designing solutions with cutting edge soft wares like Autocad, Pro-E and Staad.



## FABRICATION

- Speciality welding including FCAW, MIG, TIG and ARC welding processes.
- Plate bending machine Capacity of 70mm\*3100mm for rolling plates.
- 1000 tons press capacity to make dish ends and cones.
- SAW boom and column machine to weld C sections and L sections of big shells.
- Messers profile cutting machine with capability to cut up to 300mm in thickness.
- Technically qualified welders and approved WPS PQR for various positions, materials and thickness upto 100mm.



## MACHINING

- More than 100 machine tools
- 20 vertical borers ranging from 1000mm to 9000mm and height of 5000mm.
- Large size horizontal borers of spindle size ranging from 125mm to 250mm spindle diameter.
- Big gantry milling machines for fast and accurate milling.
- CNC vertical, horizontal 3 axis and 4 axis machining centers.

# CORE PRODUCTS

## POWER

Addressing India's growing energy demand allows us a unique opportunity to showcase our expertise and innovative skills in engineering solutions. N S Engineering excels at being a highly competitive and cost effective service provider for a gamut of power infrastructure giants.



### WIND

We manufacture stator and rotor structures for up to 3 MW wind turbines using direct drive technology. It involves highly critical fabrication and accurate machining with special painting. We also supply Nacella frames, hub castings, Yaw base, hollow shafts for wind mills.



### THERMAL

We are experts in manufacturing of coal pulverizer housings with static and dynamic separators for various sizes up to 660 MW capacity. We supply complete LP modules consisting of inner outer casings, inner inner casings, outer casings, front walls, longitudinal girders and bearing pedestals for steam turbines. We can manufacture heavy stator frames, end shields, cooler housings and HP heaters for electrical machinery. We also manufacture Tube and Ball mill assemblies, gear box housings and other critical parts.



### Hydro

Large size fabrication and machining of components such as stay ring assembly, OGV casings, top cover, diffuser ring, runner body assembly, generator stator frame and spiders are our forte.

## CEMENT

We are capable of supplying bearing housings, ball mills, kilns, trunnions, sole plates and stacker reclaimers.

## STEEL

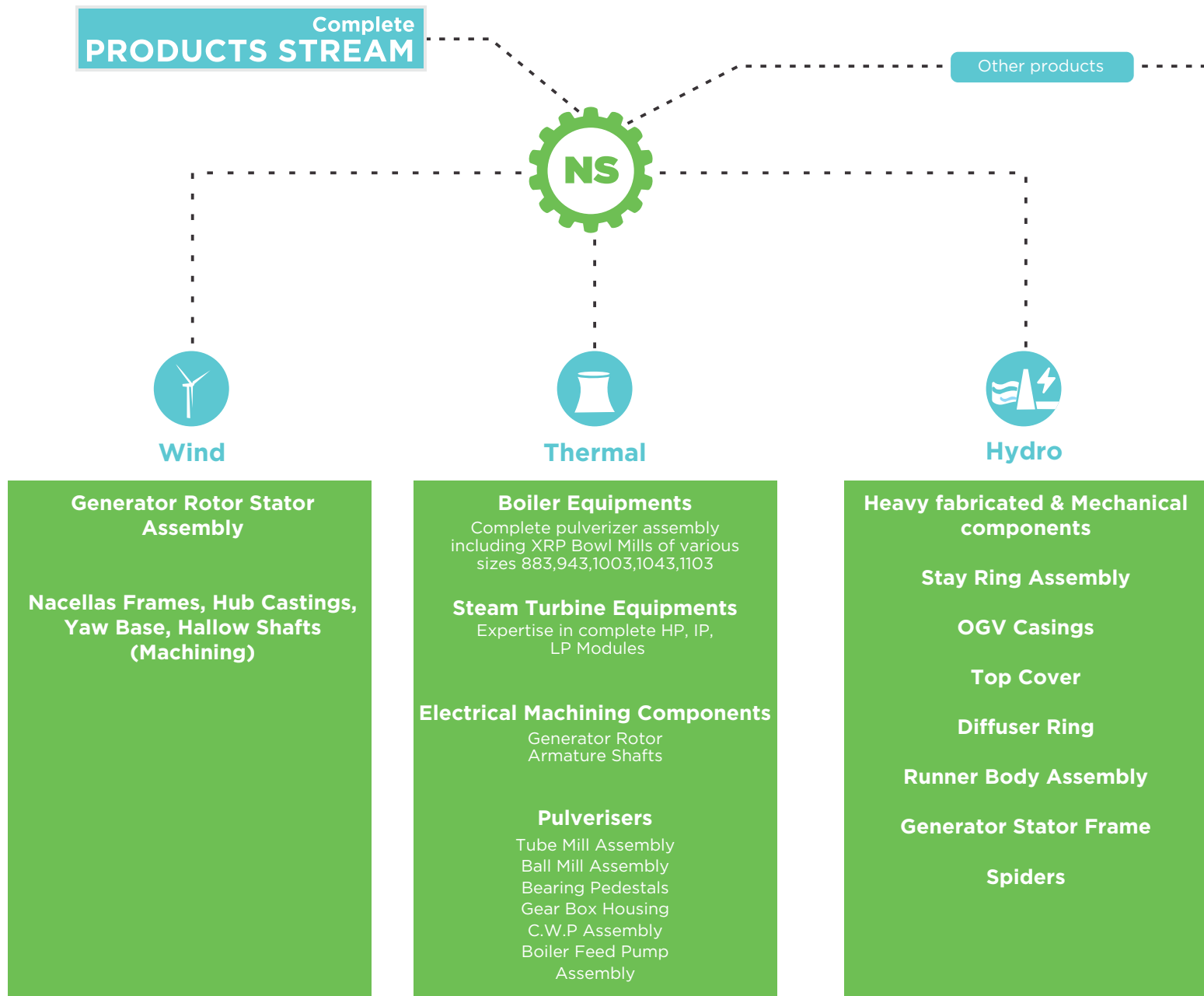
We manufacture rolling mill stands, roller tables, blast furnace shells, ladle cars for metal and slag, grab buckets, ingot transfer cars, coke pushing cars, sinter cars with drive assembly and other large items with heavy fabrication and machining.

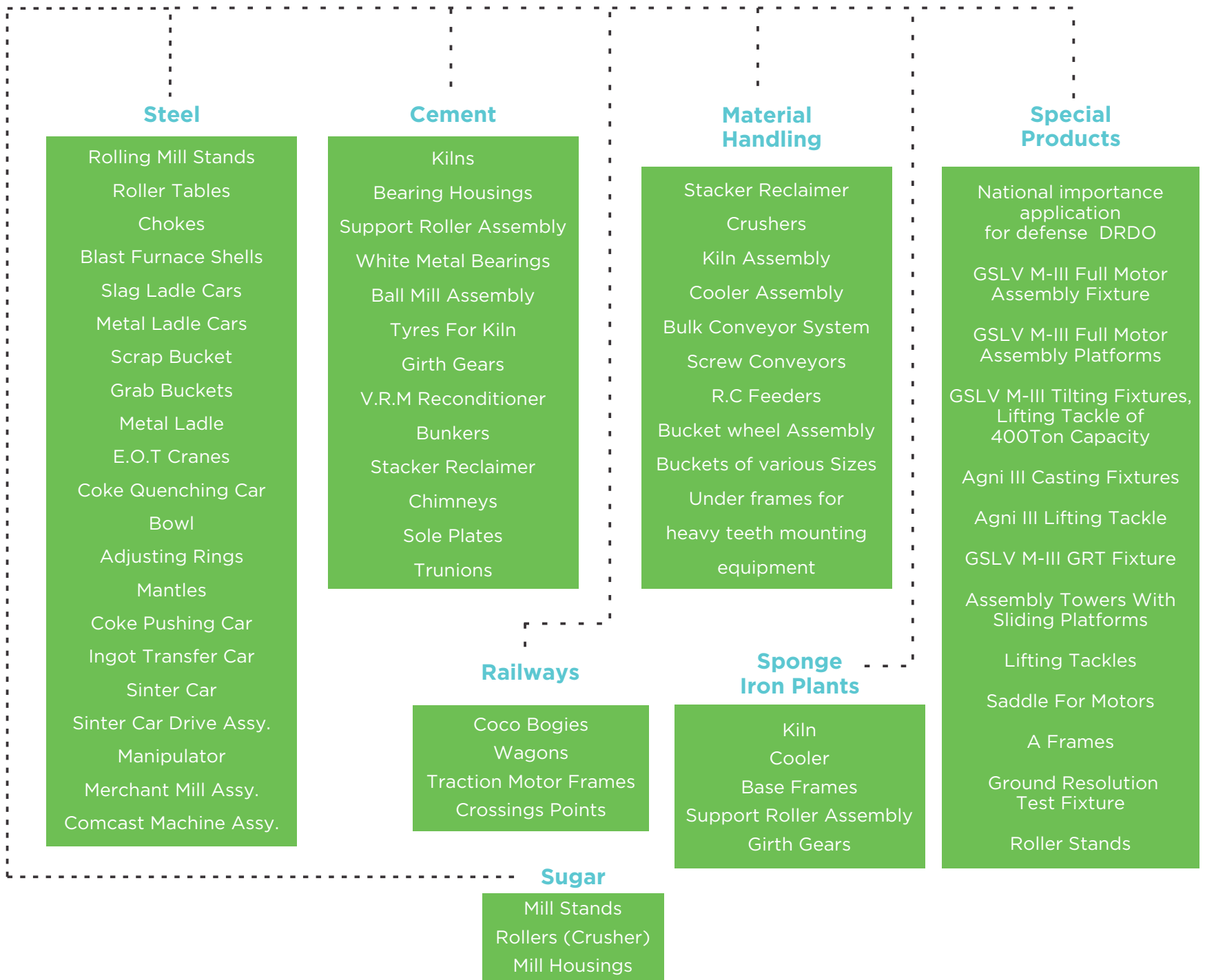
## MATERIAL HANDLING

The company is well equipped to manufacture Screw conveyors, bulk conveyor systems, R C feeders, bucket wheel assemblies and under frames.

## SPECIAL PRODUCTS

In defence and space applications we have successfully executed critical items such as assembly fixtures, working platforms, heavy lifting tackles, casting fixtures, saddles for motors and roller stands.









## QUALITY PROMISE



- We strive to deliver products exceeding customer requirements and expectations while improving value to all stakeholders.
- We are committed to continuous improvement in all our activities and practices and have an uncompromising commitment to achieve total customer satisfaction.
- Quality Control based on mutual trust among us and involvement of every single member of our organization in our Company.
- We shall cooperate with and assist our suppliers for continuous improvement in their products, services and practices.
- Comply with customer specifications, codes, statutory and regulatory requirements related to products, services and safety.



## INFRASTRUCTURE

---

- 25000 Sq. m covered work areas in 3 state of the art work shops.
- 12,000 tons of fabrication capacity per annum.
- Over 100 machine tools.
- Over 700 work force.
- Cranes with handling capacity up to 100t.
- 3000 KVA captive power source.
- Plant operations planned for 3 shifts.



25,000 Sq.Meters covered work areas in 3 State of the Art Workshops

UNIT - I

Total Area	2 Acres
Area In Use	10 Meters X 15 Meters - 3 Bays 20 Meters X 45 Meters - 2 bay
Electric Power Source	500 KVA
Total Shifts	03
Captive Power Source	500 KVA Caterpillar Make
Manufacturing Capacity	2,000 Tons per Annum

UNIT - II

Total Area	5 Acres
Area In Use	21 Meters X 200 Meters - 3 Bays
Electric Power Source	1500 KVA
Total Shifts	03
Captive Power Source	1500 KVA
Manufacturing Capacity	6,000Tons per Annum

UNIT - III

Total Area	5 Acres
Area In Use	24 Meters X 200 Meters - 3 Bays
Electric Power Source	1500 KVA
Total Shifts	03
Captive Power Source	1000 KVA Caterpillar Make
Manufacturing Capacity	6,000 Tons per Annum



12,000 Tons of  
Fabrication Capacity

Over 100  
Heavy Machine Tools

- Messers Make CNC profile cutting machine with capability to cut up to 300 mm in thickness.
  - Speciality welding includes FCAW, MIG, TIG and ARC Welding processes.
  - Plate bending machine capacity of 70 mm x 3000 mm for rolling plates and 1000 tons press capacity to make dishes and cones.
  - SAW Boom and column welding machine for defect free welding of C-Seam and L-seams joints of big shells.
  - Technically qualified welders and approved WPS, PQR for various positions, materials and thickness up to 100 mm.
  - S.R. Furnace of size 9000 mm x 6000 mm x 5000 mm.
  - Grit Blasting Facility | Painting booth | Airless spray facility.
  - Sea-worthy packing infrastructure for export.
- 
- More than 100 machine tools
  - 20 vertical borers ranging from 1000 mm to 9000 mm and a height of 5000 mm
  - Large size horizontal borers of spindle size ranging from Dia 125 to Dia 225 mm
  - Big gantry milling machine for fast and accurate milling
  - CNC vertical, horizontal 3-axis, 4-axis machining centres.

# FABRICATION FACILITY

## MATERIAL PREPARATION EQUIPMENT

Machine spec	Quantity
CNC profile cutting machine 5800x30000mm	01 no
PUG cutting machines	20 nos
Hand cutting torches	20 nos
Screw press upto 25mm thick capacity	01 no
Hydraulic press upto 80mm thick capacity.	01 no
Grinding machines AG&, GQ4, Gk4	40 nos
Plate rolling machine 70x 3000mm with cone bending provision	01 no
Plate rolling machine 25x 3000mm	01 no

## FABRICATION EQUIPMENT

Machine spec	Quantity
Fabrication beds 20000x3000mm	01 no
Fabrication beds 6000x12000mm	02 nos
Fabrication beds 5000x3000mm	02 nos
SAW machine X-6500mm; Y-6000mm; Power source 1200Amps	01 no
SAW machines 600Amps	02 nos
Welding Rectifiers 600 Amps	30 nos
Welding Rectifiers 400 Amps	06 nos
Welding Inverters 400 Amps	04 nos
MIG welding machines 600 Amps	40 nos
TIG welding machine	01 no
Welding rotators	20 nos
Electrode baking oven	05 nos
Welding manipulator	01 no

## STRESS RELIEVING FACILITY

Machine spec	Quantity
Stress relieving furnace 9000 x 7000 x 6000mm	01 no

## SURFACE FINISHING FACILITIES

Machine spec	Quantity
Grit blasting booth 6000x8000x8000mm	01 no
Painting booth 6000x8000x8000mm	01 no
Airless spray equipment	03 nos

# INSPECTION EQUIPMENT

Machine spec

Quantity

Vernier calipers from 300 to 3000mm in all ranges	02 sets
Outside micrometers up to 3000mm in all ranges	02 sets
Depth verniers from 250 to 1000mm in all ranges	02 sets
Inside micrometers from 50 to 1500mm in all ranges	02 sets
Inside tube micrometers from 1000 to 5000mm in all ranges	02 sets
Bore gauges 35 to 150mm	02 sets
Height gauges up to 1500mm	02 sets
Bevel protractors and welding gauges	02 sets

We have DP testing, Magnetic particle inspection equipment, Ultrasonic testing equipment for welding inspection.



# MACHINERY

## VERTICAL BORERS

Machine spec	Make	Quantity
CNC VTL Swing-10000mm and Height 2500mm	SCHIESS	01 no
CNC VTL Swing-8000mm and Height 4500mm	KARATS	01 no
CNC VTL Table - 6300mm Swing-7000mm and Height 3500mm	CRAVEN	01 no
VTL Table - 6700mm Swing-7000mm and Height 3600mm with DRO	RICHARDS	01 no
VTL Swing-4000mm and Height 3000mm	WMW	01 no
CNC Swing-3200mm and Height 3000mm	SCHIESS	01 no
VTL Swing-3200mm and Height 1500mm	WEBSTER&BERNET	01 no
VTL Swing-3200mm and Height 3000mm	WMW	01 no
VTL Swing-2500mm and Height 2000mm	WMW	01 no
VTL Swing-2000mm and Height 2000mm	NILES	01 no
VTL Swing-1700mm and Height 1000mm	WEBSTER&BERNET	01 no
VTL Swing-1500mm and Height 1000mm	WEBSTER&BERNET	03nos
VTL Swing-1200mm and Height 1000mm	WEBSTER&BERNET	02nos

## HORIZONTAL BORERS

Machine spec	Make	Quantity
7Axis CNC HBM Spindle 160 mm X:12000mm; Y:6000mm; Z:2500mm Rotary table 4000x4000mm	SCHIESS	01 no
NC HBM Spindle 225 mm X:9000mm; Y:4000mm; Z:1800mm Rotary table 3000x3000mm	FRORIEP	01 no
CNC HBM Spindle 160mm X:7000mm; Y:3500mm; Z:2000mm	SKODA	01 no
Floor type HBM Spindle 160mm X:3000mm; Y:2700mm; Rotary table 2000x2000mm	SKODA	01 no
Floor type HBM Spindle 160mm X:3000mm; Y:2500mm; Rotary table 2000x2000mm	WMW	01 no
Floor type HBM Spindle 150mm X:3000mm; Y:2500mm; With DRO 3 axis	COLLET	01 no
Floor type HBM Spindle 125mm X:2000mm; Y:1500mm; Rotary table 1800x1800mm	WMW	01 no
Floor type HBM Spindle 125mm X:1500mm; Y:1000mm; With DRO 3 axis	WMW	01 no

## PLANO MILLER

Machine spec	Make	Quantity
Plano milling machine X- 9000 mm , Y- 2000 mm with universal milling attachment	HELLER	01 no

## LATHES

Machine spec	Make	Quantity
CNC Centre Lathe 2500mm Dia and 10000mm long	WMW	01 no
Lathe between centres 2000mm and 1000mm dia.	Mysore Kirloskar	01 no
Centre lathe between centres 10000mm and above bed 700mm Dia.	BECO	01 no

## DRILLERS

Machine spec	Make	Quantity
Radial drilling machine with spindle Diameter 110mm	RABOME	01 no
Radial drilling machine with spindle Diameter 100mm	HMT	01 no
Radial drilling machine with spindle Diameter 100mm	RABOME	01 no
Universal drilling machine with spindle Diameter 100mm with angular drilling	WMW	01 no
Radial drilling machine with spindle Diameter 80mm	RABOME	01 no
Radial drilling machine with spindle Diameter 80mm	HMT	01 no
Radial drilling machine with spindle Diameter 65mm	HMT	01 no
Radial drilling machine with spindle Diameter 63mm	HMT	01 no
Radial drilling machine with spindle Diameter 62mm	HMT	01 no
Bar drilling machine with spindle Diameter 100mm; 3400x9000mm with DRO in 3 axis	RABOME	01 no

## SLOTING

Machine spec	Make	Quantity
Heavy Duty slotting machine Stroke 450mm	Mysore Kirloskar - India	01 no





# INFRASTRUCTURE SHOWCASE



# Heavy Engineering Machinery

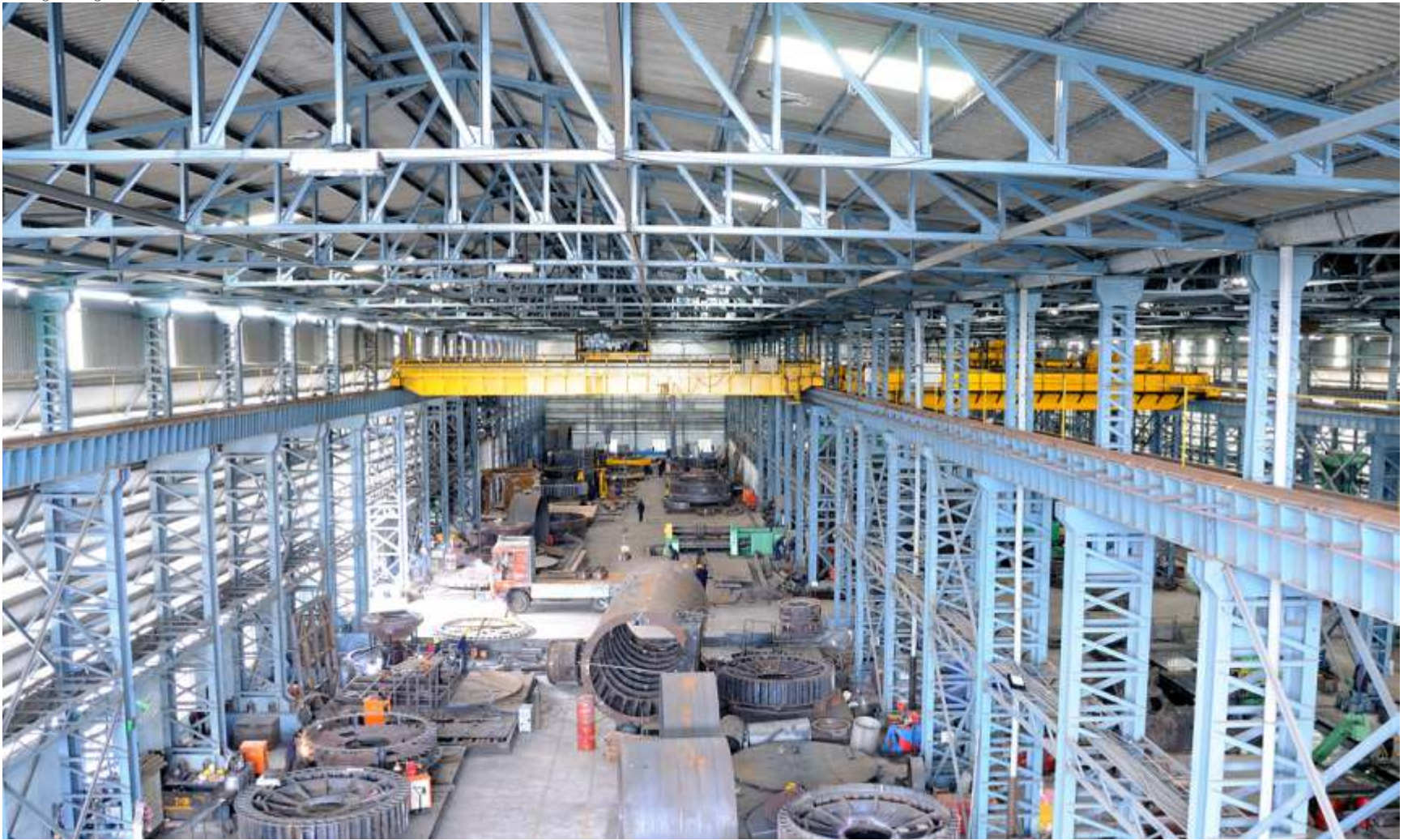
## BAY1: HEAVY MACHINERY





**BAY 2 & 3 : ASSEMBLY & FABRICATION**





**MAKE: KARATS**



CNC vertical borer of chuck diameter 8000mm and height 4500mm



**MAKE: SCHIESS**



CNC VTL with Swing 10000mm and Height 2500mm



**MAKE: FRORIEP**

Horizontal boring machine with spindle diameter 225mm X travel : 12000mm, Y travel : 5000mm and Z travel : 2000mm with a rotary table of 3000mmx3000mm

**MAKE: FRORIEP**

Horizontal boring machine with spindle diameter 225mm X travel : 12000mm, Y travel : 5000mm and Z travel : 2000mm with a rotary table of 3000mmx3000mm

## MAKE: SCHIESS



Machining of 150 MW Turbine Casing on a 7 axis CNC HBM with Spindle 160mm X:12000mm, Y:6000mm, Z:2500mm and Rotary table of 4000mm x 4000mm

**MAKE: WMW**



Floor type HBM with Spindle 160mm, X:3000mm, Y:2500mm and Rotary table of 2000mmx2000mm

**MAKE: Geo Richards & Co**



Vertical borer with a table diameter of 6800mm & Height 3600mm

**MAKE: IMCAR**



70mmx3100mm plate bending machine

**MAKE: MESSERS**



Profile cutting machine with cutting thickness up to 300mm

**MAKE: ESAB**

SAW WELDING MACHINE with  
a column height of 6000mm



## STRESS RELIEVING



Heat treatment furnace of size 9000mmx7000mmx6000mm for Stress relieving and Normalizing



**MAKE: MEC SHOT**

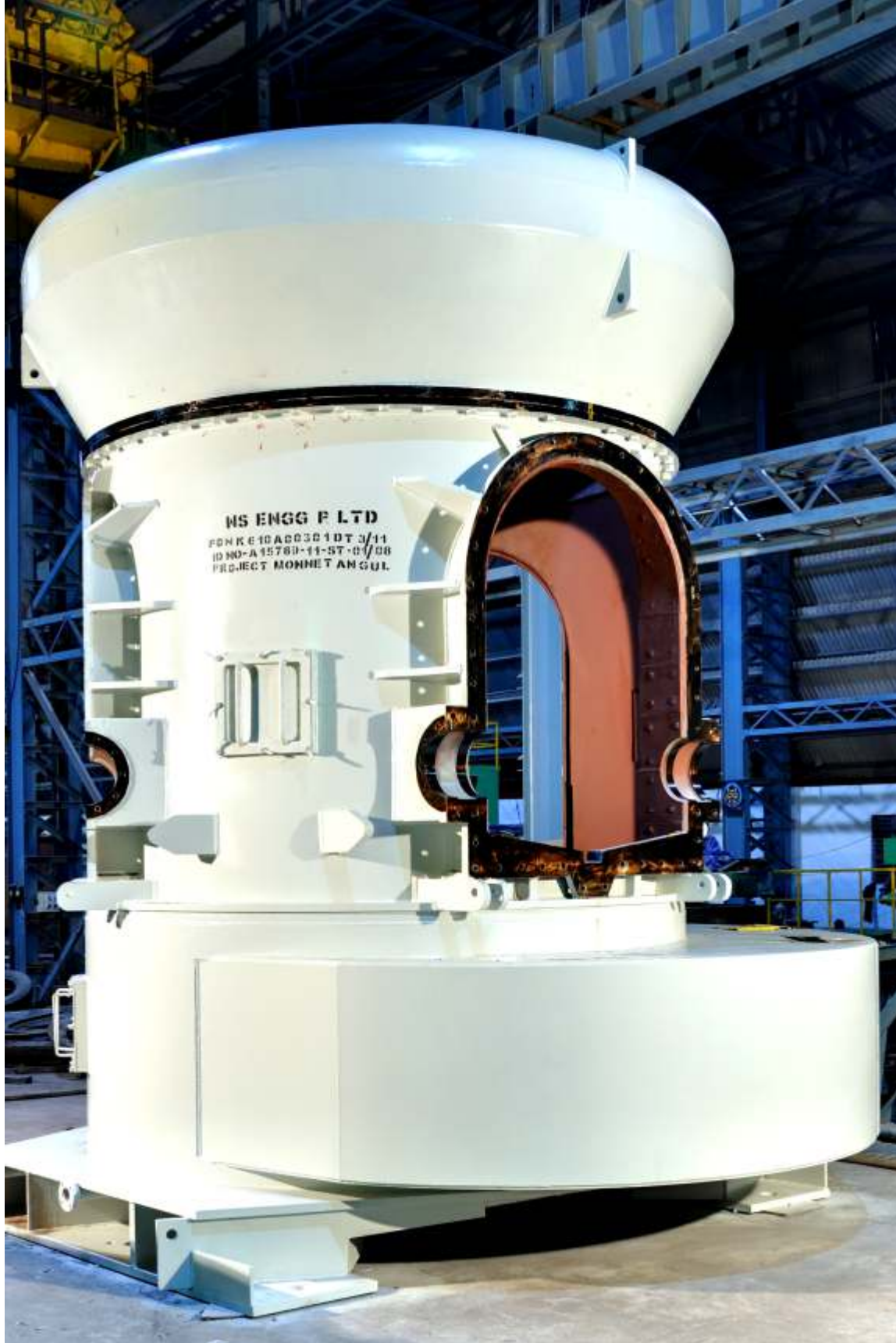


Shot blasting chamber for cleaning the job

**PAINTING**



Painting booth with controlled temperature for good application of paint



Large finished job assembly with a net weight of 75 tons

## VISION STATEMENT

To seize opportunities of tomorrow and to create a company that will leave us in an enviable position in the decades ahead.

We shall ensure quality, reliability and sustainability thereby enhancing value of all stakeholders.

To continually improve upon the quality of life of communities we serve and support programs that address community specific needs.

We shall strive to make a positive impact on the planet by being a committed corporate citizen and be sensitive to the communities around.

**N.S. ENGINEERING COMPANY (P) LIMITED**

Unit No: B-28, BHEL Ancillary Industrial Estate  
Ramachandrapuram HYDERABAD- 502032  
Andhra Pradesh, India.

Ph : 040-23022246, 23020626 | Fax : 040-23027115

**Web:** nsengineering.in | **e-mail:** Info@nsengineering.in

**Unit - I**

B-28, BHEL Ancillary Industrial Estate  
Ramachandrapuram  
Hyderabad 502032

Fax: 040-23027115

**Unit - II**

Survey no: 312 & 313, Coca Cola Road,  
Bachupally Village, Qutubullapur Mandal,  
Ranga Reddy Dist, Hyderabad

Fax: 040-23047115

**Unit - III**

Survey no: 172/A, Plot no: 130,  
Bollaram Village, Jinnaram mandal,  
Medak District

Fax: 040-23047115

For all your manufacturing needs

**CONTACT: +91 - 93 93 93 2166**

**+91 - 93 93 93 9050**